

=
- 9:

» - «
»
. - 2013. - .1, .2 - . 235-238

IN VITRO

15-20

in vitro

-
-
-
-

:
() ;

(1-).



1- -

2 / 2,4-D
2,4 D

1 /

2,4-D

0,5 /

, 53%

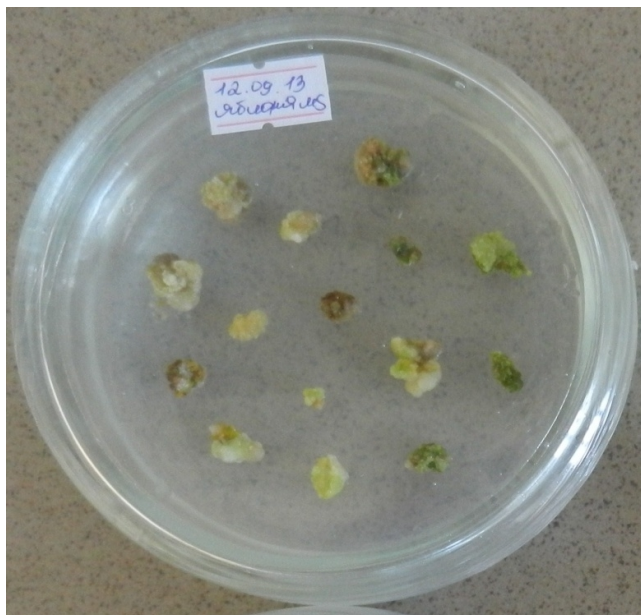
47%

82%.

1- -

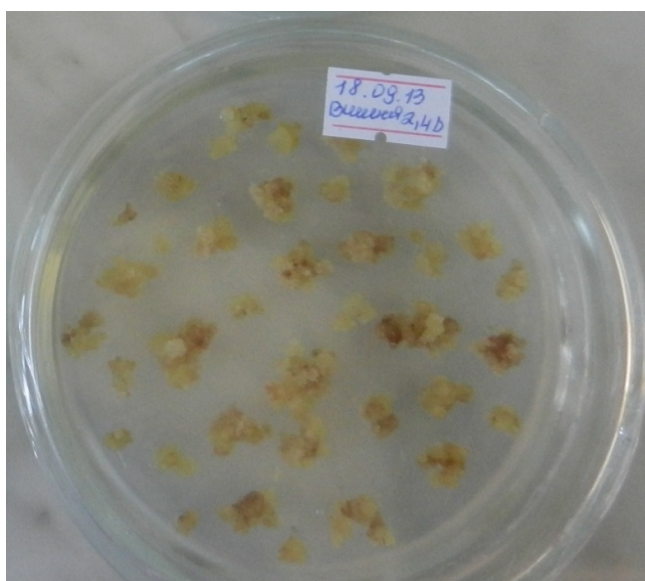
			%		%
	227	108	47	119	53
	270	222	82	48	18

2-



2- -

3- .



3- -